

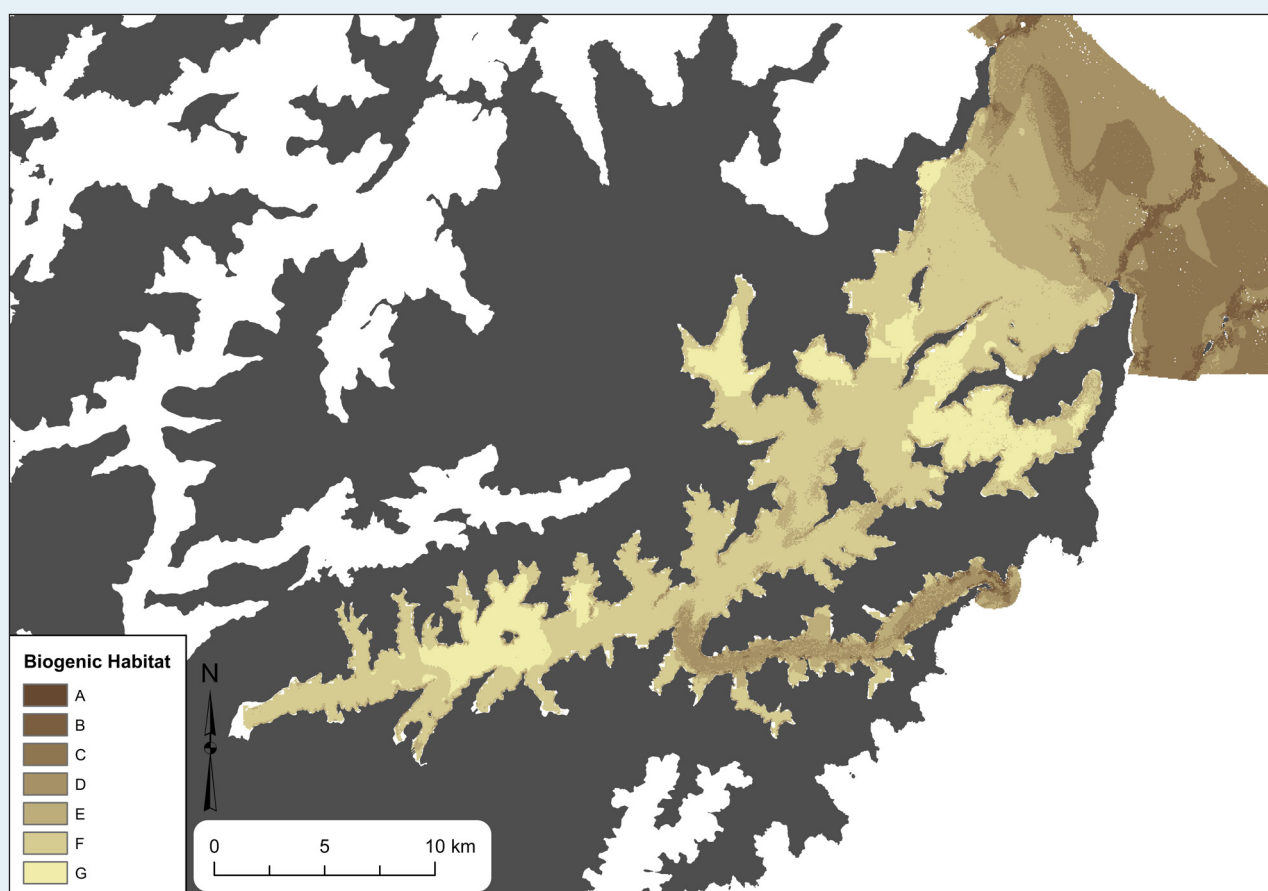


Map

Biogenic habitat provision: Queen Charlotte Sound (417 km²)

This biogenic structure map shows where refuge habitats, eg kelp forests, sponge gardens and tubeworm mounds, are predicted to be found. These habitats act as nurseries for young finfish and invertebrates.

The zones indicate the classification of importance to service provision from **high importance, A** (darkest shading), to **low importance, G** (lightest shading).



Townsend M & Lohrer AM (2019). Empirical validation of an ecosystem service map developed from ecological principles and biophysical parameters. *Frontiers in Marine Science*, 6(21), 1-11. DOI: 10.3389/fmars.2019.00021