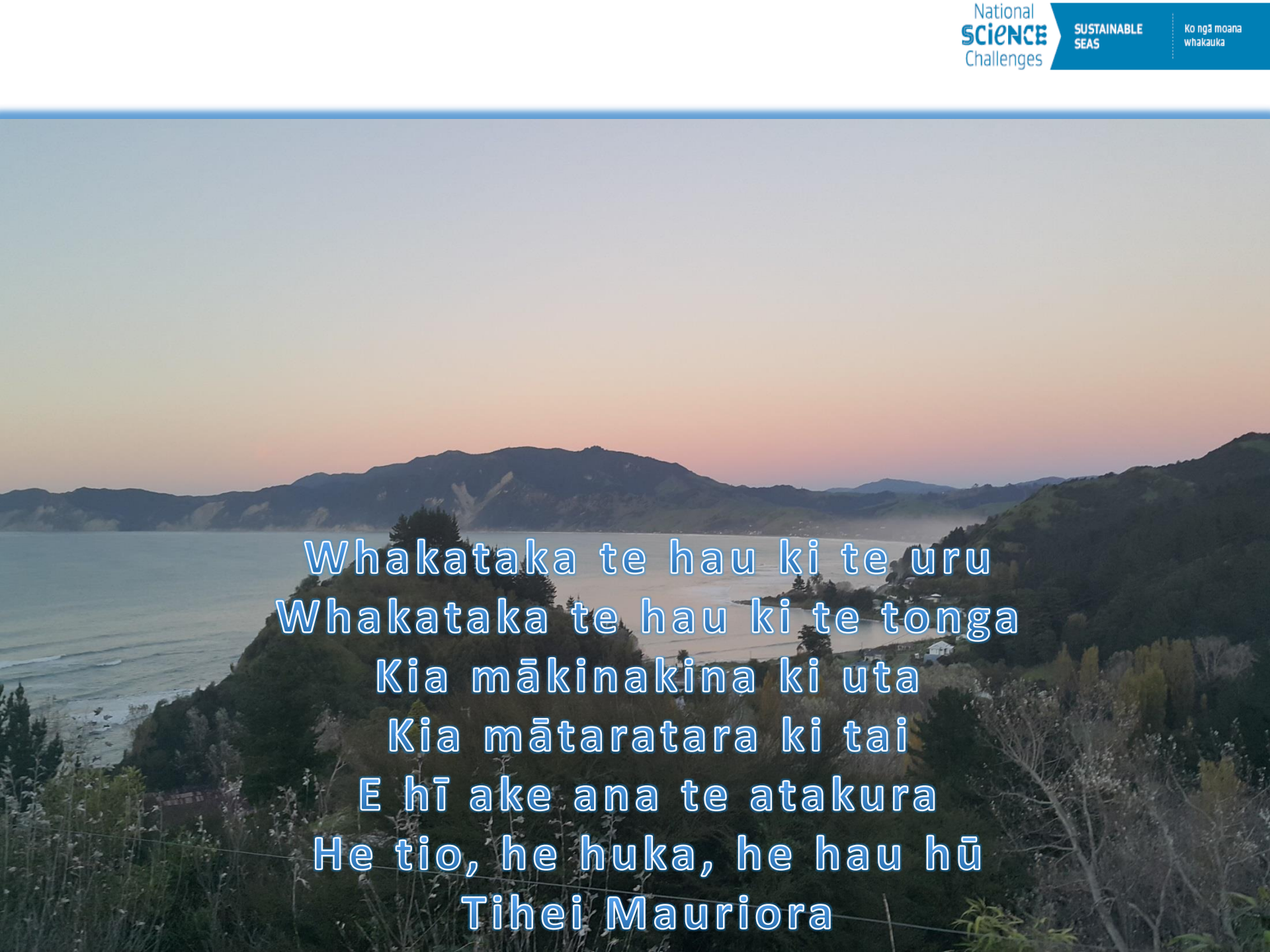




Mauri Moana, Mauri Tangata, Mauri Ora: Values we have identified

Kate Davies, Kimberley Maxwell, Kelly Ratana, Caine Taiapa &
Shaun Awatere

May 3 2017 – Sustainable Seas Conference



Whakataka te hau ki te uru
Whakataka te hau ki te tonga
Kia mākinakina ki uta
Kia mātaratara ki tai
E hī ake ana te atakura
He tio, he huka, he hau hū
Tihei Mauriora

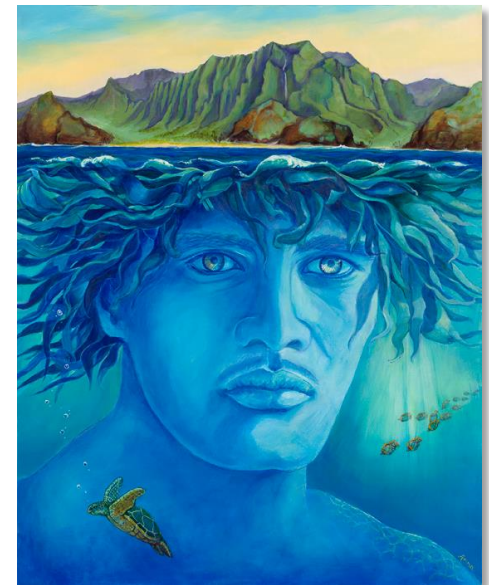
Ngā Kairangahau



Social values



Indigenous values



Mātāpono Māori

KA MATE! It is death! We were at war	KA MATE! It is death!
KA ORA! It is life! But now there is peace.	KA ORA! It is life!
KA MATE! We're going to die! We thought we were all going to die	KA MATE! We're going to die!
KA ORA! We're going to live! but now we are safe	KA ORA! We're going to live!
TENEI TE TANGATA This is the man, because our leader, so strong and masculine,	PU-HURU-HURU so hairy
NANA NEI I TIKI MAI, WHAKAWHITI TE RA! who fetched, and made shine the sun! has unified us and brought back the sunny days of peace!	
UPANE! Together!	KA UPANE! Keep together!
We are all working in harmony, side by side,	
HUPANE! Up the step!	KAUPANE! A second step!
making steady progress	
WHITI TE RA! Out comes the sun!	HI! Ahh!
to prolong these sunny days of peace.	



MAURI

Mātāpono-a-iwi

Tirohanga/Observations	Nga Uara/Values and Aspirations	How do we know
<p>Tāngata whenua have witnessed a loss of traditional shellfish habitat, contamination of shellfish beds and the decline in shellfish quality and quantity. Sustainability of remaining shellfish bed is of huge concern.</p>	Shellfish populations are sustainable	There are small and big shellfish Shellfish populations recover seasonally
	Shellfish are accessible	All beds are accessible Harvesting shellfish is not limited by land ownership
	Manaakitanga is upheld	Shellfish are abundant enough that they can be collected for marae gatherings Shellfish are abundant enough that they can feed whānau Shellfish are of harvestable size Shellfish are fat during seasonal ripening
	Shellfish is safe to eat	Shellfish smell normal and pleasant Shell colouring and flesh colouring is normal Shellfish taste normal and pleasant Shell is thick and strong
	Cultural practices pertaining to shellfish are preserved	Whānau practice traditional shellfish harvesting practices Whānau practice traditional shellfish processing practices Whānau practice traditional shellfish storing and preserving practices Whānau practice traditional shellfish management practices
	Harvesting shellfish is affordable	There is no cost to harvesting shellfish Whānau do not have to buy shellfish



Te Ara Whakamua

- Social values – explore in more depth & broader scale
- ‘Peace’ will require further studies in Sustainable Seas
- Māori principles are well known, further understanding and application is required
- Development of a unique Aotearoa based EBM

