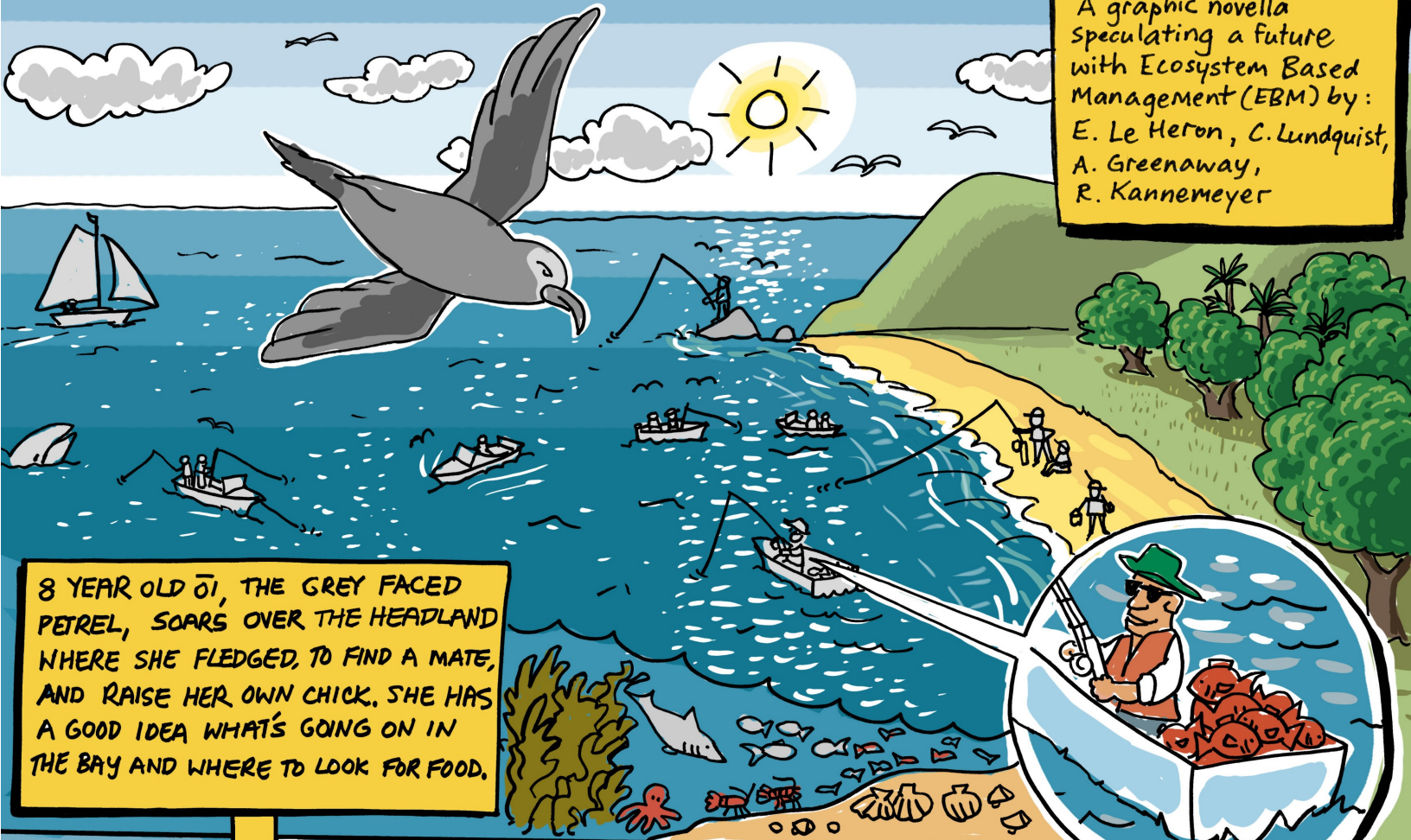


Ōi and Grace's EBM Journey: Towards a Future of Collective Care for Land and Sea

A graphic novella
speculating a future
with Ecosystem Based
Management (EBM) by:
E. Le Heron, C. Lundquist,
A. Greenaway,
R. Kannemeyer



8 YEAR OLD ŌI, THE GREY FACED PETREL, SOARS OVER THE HEADLAND WHERE SHE FLEDGED, TO FIND A MATE, AND RAISE HER OWN CHICK. SHE HAS A GOOD IDEA WHAT'S GOING ON IN THE BAY AND WHERE TO LOOK FOR FOOD.



23 YEARS LATER WHEN ŌI RETURNS SHE SEES SOMETHING DIFFERENT HAPPENING ON THE BEACH

What are people up to?

AS SHE RETURNS TO THE HEADLAND OVER THE YEARS, ŌI NOTICES CHANGES IN THE BAY AND REALISES IT KEEPS GETTING HARDER TO FIND SQUID AND OTHER FOOD



AS SHE GETS OLDER
ŌI KEEPS WATCH ON
THE PEOPLE OF HER BAY

No boats
and the
headland is fenced.
What's going on?

RAHUI
NO FISHING
OR HARVEST

IN A COUPLE OF YEARS
SHE REALISES IT'S EASIER
TO FIND FOOD AGAIN AND
SHE SEES SIGNS OF
ABUNDANCE RETURNING

ONE NIGHT ŌI NOTICES A
SMALL BRIGHT LIGHT AND
SWOOPS DOWN TO GET A
CLOSER LOOK

GRACE GETS A FRIGHT AS THE PETREL NARROWLY MISSES HER

GRACE RECOGNISES THE PETREL BY THE BAND ON HER LEG

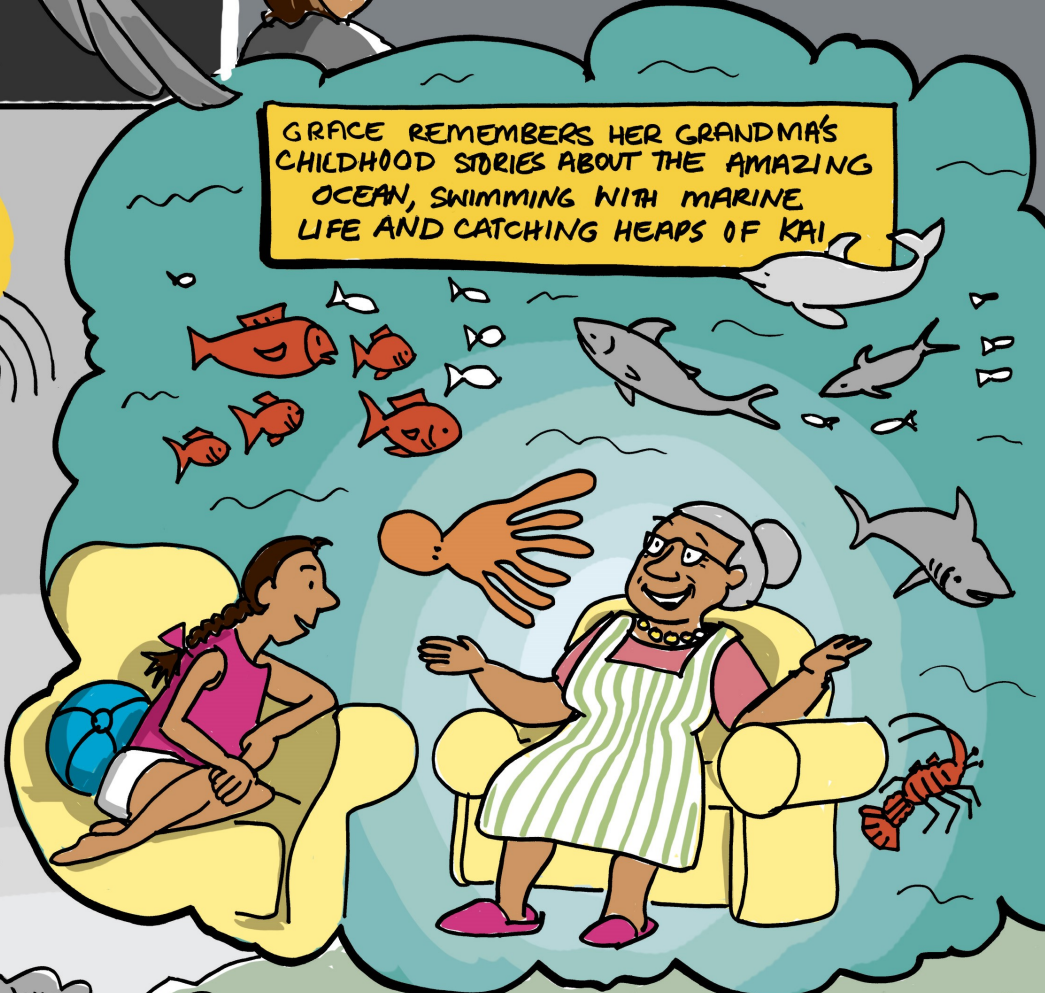


Whoa! What the hell?!!

That's Ōi the one my mother banded when she was little. I'm glad Ōi is doing well

SHE'S CHECKING THE ABUNDANCE APP TO SEE WHAT KAI MOANA IS AVAILABLE FOR HER TO HARVEST FOR A FAMILY GATHERING TOMORROW

GRACE REMEMBERS HER GRANDMA'S CHILDHOOD STORIES ABOUT THE AMAZING OCEAN, SWIMMING WITH MARINE LIFE AND CATCHING HEAPS OF KAI



Good-I can sign up to harvest some snapper and pipis

Bloody climate change and people being greedy - wrecking everything!

AND REMEMBERS HOW DEGRADED EVERYTHING WAS AND THINKING ...



BUT THEN SOMETHING HAPPENED



A CULTURAL SHIFT - PEOPLE CAME TOGETHER TO PLEDGE TO CARE FOR THE HEADLAND, BAY AND OCEAN AND DO THINGS DIFFERENTLY - TO BALANCE USE WITH PROTECTION

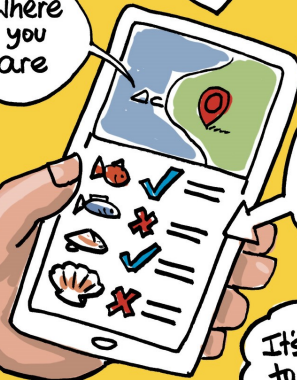
EVEN HER POPPA CAME ON BOARD



Well, I'm not changing

THE ABUNDANCE APP MADE A BIG DIFFERENCE

Where you are



What you can and can't catch

It's easy to care

AND SOCIAL MEDIA CAMPAIGNS



AT THE LOCAL COUNCIL ... GRACE AND HER TEAM DEVELOPED AN IN-HOUSE COUNCIL VERSION TOO!

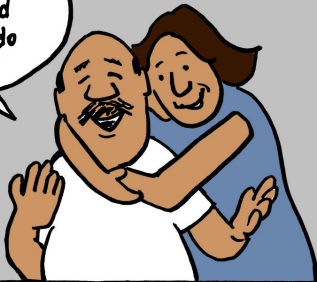
EBM WORKS!

OUR COUNCIL FEATURES

- SPECIFIC PLACE BASED INFORMATION
- APPLICABLE RULES/ REGULATIONS
- COMMUNITY GAUGE
- RELEVANT CROSS DEPARTMENT INFORMATION



Yeah OK, protected areas do work



THANK GOODNESS PEOPLE CAN CONNECT EASILY WITH EACH OTHER AND HAVE THE INFORMATION THEY NEED TO CARE FOR THIS SPECIAL PLACE.

